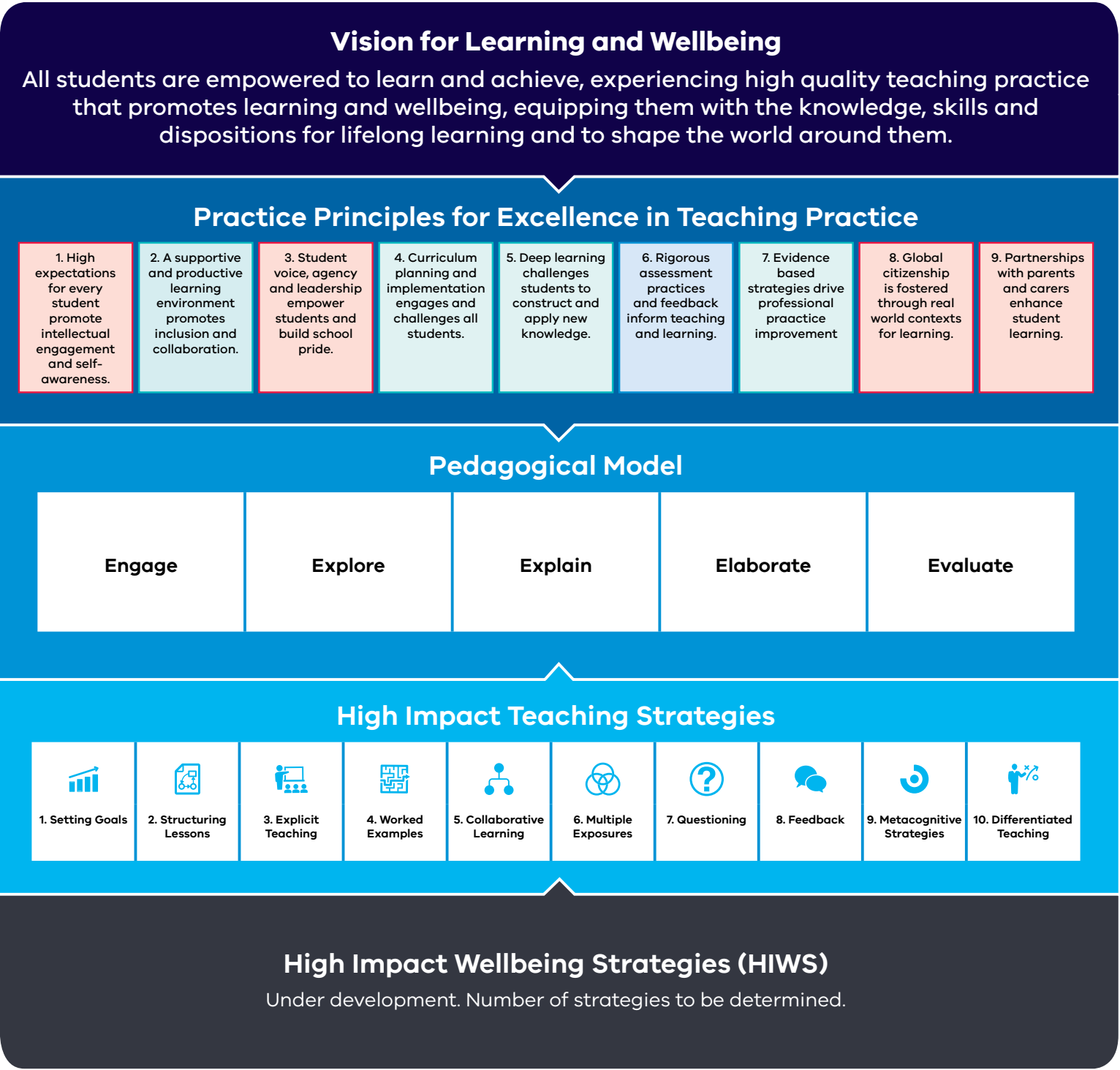




## Victorian Teaching and Learning Model (VTLM)



A **Vision for Learning and Wellbeing** helps create a unified set of values and beliefs to drive a high performance learning culture

The **Practice Principles** are nine signature pedagogies which make the difference in improving student achievement and motivation

The **Pedagogical Model** describes what effective teaching looks like in the classroom and helps teachers apply the Practice Principles

Development is underway of a new, fifth component to the VTLM, a set of **High Impact Wellbeing Strategies (HIWS)**, to reflect the priority of student wellbeing within FISO 2.0.

\* The Victorian Early Years Learning and Development Framework (VEYLDF) is a resource for primary school teachers. Abilities Based Learning and Education Support (ABLES) is a resource for teachers of students with additional learning needs whose achievement is described in the Victorian Curriculum Towards Foundation, levels A to D.